

TECHNICAL DATA

Dimensions

| | |
|------------------------------|-----------------------------|
| Exterior Dimensions (WxDxH) | 53 1/8" x 31 7/8" x 79 3/8" |
| Interior Dimensions (WxDxH) | |
| Net Volume (cu. ft.) | 45 cu. ft. |
| Gross Weight | |
| Packaging Dimensions (WxDxH) | |

Cooling

| | |
|------------------------------------|-------------|
| Temperature Range | 33° - 40° F |
| Refrigerant | R290 |
| Maximum Ambient Temperature Rating | 90° F |
| Defrosting | Automatic |
| Temperature Display | Yes |
| Temperature Controller | Digital |
| H/P | 1/4+ |

Construction

| | |
|---------------------|------------------------------|
| Exterior Material | Painted steel |
| Door/Lid Material | Glass Door |
| Insulation Material | Foamed in place polyurethane |
| Shelf Material | Plastic coated steel |
| Shelf Load Capacity | 90 lbs |

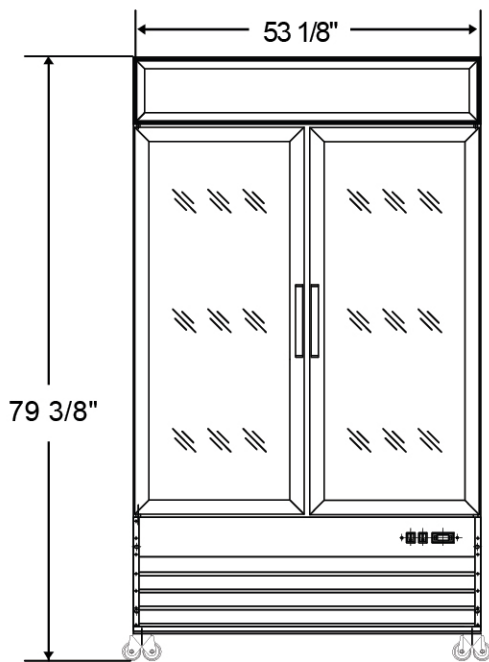
Electrical

| | |
|---------|----------|
| Voltage | 115/60/1 |
| Amps | 4.3 |
| Hz | |

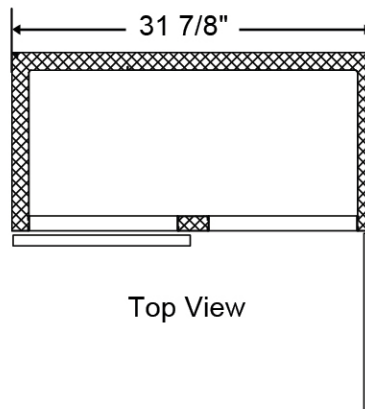
PLAN VIEW



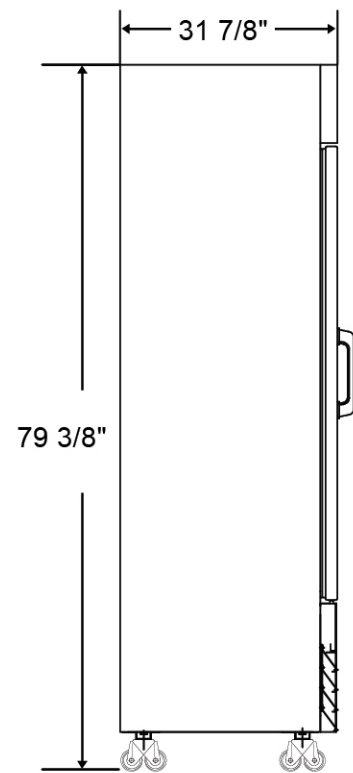
COMPLIES WITH ANSI/NSF 7 FOR FOOD SERVICE



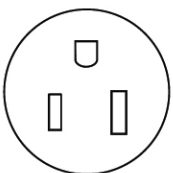
Front View



Top View

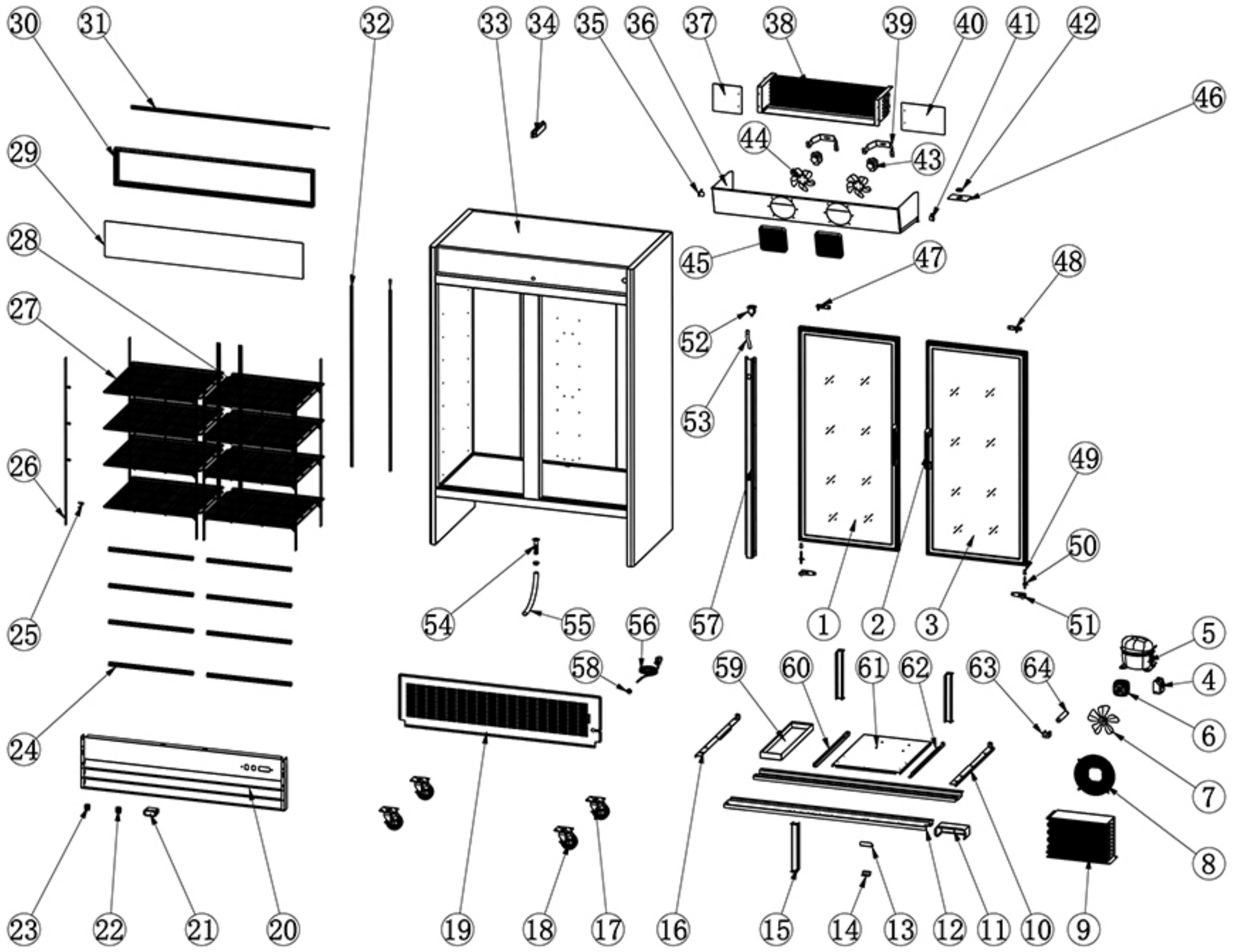


Side View



NEMA 5-15P

SGM-53RS



| NO. | Part Name | Factory Part NO. | QTY |
|-----|--|------------------|-----|
| 1 | LEFT GLASS DOOR | 14201010077 | 1 |
| 2 | GLASS DOOR HANDLE | 12526260024 | 2 |
| 3 | RIGHT GLASS DOOR | 14201010078 | 1 |
| 4 | COMPRESSOR COMPONENT | | 1 |
| 5 | COMPRESSOR | 17202163125 | 1 |
| 6 | CONDENSER FAN MOTOR | 22752520004 | 1 |
| 7 | CONDENSER FAN MOTOR BLADE | 16381738112 | 1 |
| 8 | CONDENSER FAN COVER | | 1 |
| 9 | CONDENSER | 17304100381 | 1 |
| 10 | RIGHT BRACKET CONNECTOR | | 1 |
| 11 | WATERPROOF COVER OF THERMOSTAT | 16351170004 | 1 |
| 12 | CASTER SUPPORTER | | 2 |
| 13 | HANDLE FOR INSTALLATION BOARD | | 1 |
| 14 | LIMIT BLOCK FOR INSTALLATION BOARD | | 1 |
| 15 | SUPPORT ROD | | 1 |
| 16 | LEFT BRACKET CONNECTOR | | 1 |
| 17 | CASTER WITHOUT BREAK | 12533040420 | 2 |
| 18 | CASTER WITH BREAK | 12533070420 | 2 |
| 19 | BACK GRILL | | 1 |
| 20 | FRONT GRILL | | 1 |
| 21 | THERMOSTAT | 17505180005 | 1 |
| 22 | LED SWITCH | 17749180002 | 1 |
| 23 | POWER SWITCH | 17749211297 | 1 |
| 24 | SHELF TAG | 16311010545 | 8 |
| 25 | K CLICK | 5302000003 | 32 |
| 26 | K STRIP | | 8 |
| 27 | LEFT SHELF | 12502012864 | 4 |
| 28 | RIGHT SHELF | 12502012864 | 4 |
| 29 | LIGHT BOX PLATE | 16317181343 | 1 |
| 30 | LIGHT BOX FRAME | 12901191348 | 1 |
| 31 | LED LIGHT IN LIGHT BOX | 17740410075 | 1 |
| 32 | LED LIGHT | 17740410071 | 2 |
| 33 | CABINET | | 1 |
| 34 | LED POWER SUPPLY | 22753530009 | 1 |
| 35 | LEFT BRACKET FOR EVAPORATOR FAN COVER | | 1 |
| 36 | EVAPORATOR COVER | | 1 |
| 37 | LEFT END PLATE FOR EVAPORATOR | | 1 |
| 38 | EVAPORATOR | 17405070746 | 1 |
| 39 | EVAPORATOR INSTALLATION BRACKET | 22719190001 | 2 |
| 40 | RIGHT END PLATE FOR EVAPORATOR | | 1 |
| 41 | RIGHT BRACKET FOR EVAPORATOR FAN COVER | | 1 |

| | | | |
|----|-----------------------------------|-------------|---|
| 42 | POWER CORD COVER | 16349180033 | 1 |
| 43 | EVAPORATOR FAN MOTOR | 22752520015 | 2 |
| 44 | EVAPORATOR FAN MOTOR BLADE | 16381738012 | 2 |
| 45 | EVAPORATOR FAN COVER | 12504050002 | 2 |
| 46 | WIRE PROTECTION PLATE | | 1 |
| 47 | UPPER LEFT HINGE | 12517050002 | 1 |
| 48 | UPPER RIGHT HINGE | 12517050004 | 1 |
| 49 | AXIS COVER | 16353010017 | 4 |
| 50 | BOTTOM SPRING AXIS | 12515030003 | 2 |
| 51 | BOTTOM HINGE | 12517060309 | 2 |
| 52 | DRAIN CONNECTOR | 16369330055 | 1 |
| 53 | DRAIN TUBE | 15818180013 | 1 |
| 54 | PLASTIC DRAIN TUBE | 15810020900 | 1 |
| 55 | DRAIN PIPE | 15818180020 | 1 |
| 56 | POWER CORD | 17664640052 | 1 |
| 57 | AIR PIPE PROTECTION BOARD | | 1 |
| 58 | POWER CORD COVER | 16349150001 | 1 |
| 59 | OUTER DRAIN PAN | 16369690076 | 1 |
| 60 | LEFT RAIL FOR INSTALLATION BOARD | | 1 |
| 61 | INSTALLATION BOARD | | 1 |
| 62 | RIGHT RAIL FOR INSTALLATION BOARD | | 1 |
| 63 | FILTER FIXER | 16369690257 | 1 |
| 64 | FILTER | 17111250198 | 1 |