

TECHNICAL DATA

Dimensions

| | |
|---|-----------------------|
| Overall Dimensions (WxDxH) | 30" x 32.6" x 67.6" |
| Machine Dimensions (WxDxH) | 30" x 24.3" x 22.4" |
| Bin Dimensions (WxDxH) | 30" x 32.7" x 45.3" |
| Output (lb/24hr) | 500 lbs |
| Bin Capacity | 275 lbs |
| Net Weight (Machine) | 144 lbs |
| Gross Weight (Machine) | 155 lbs |
| Net Weight (Bin) | 100 lbs |
| Gross Weight (Bin) | 111 lbs |
| Packaging Dimensions (Main Machine) (WxDxH) | 33.2" x 29.5" x 24.4" |
| Packaging Dimensions (Ice Bin) (WxDxH) | 33.4" x 35" x 41.5" |
| Ice Cube Size half cube | .86"x.86".86" |

Construction

| | |
|----------------------------------|----------------------------|
| Exterior Material | 304 series stainless steel |
| Interior Material | Polyethylene |
| Water Filter Capacity | 2.2 GPM |
| UV Light Included For Sanitation | |

Cooling

| | |
|------------------------|---------|
| Refrigerant | R290 |
| Temperature Display | Yes |
| Temperature Controller | Digital |
| Condenser Unit | Air |
| Compressor | Secop |

Electrical

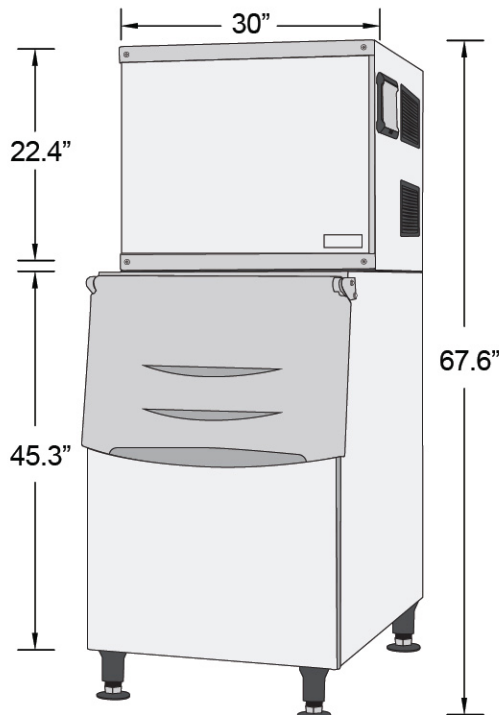
| | |
|---------|-------|
| Voltage | 115 |
| Power | 1113W |
| Hz | 60 |

PLAN VIEW

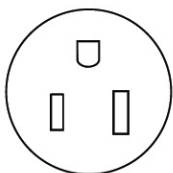


Intertek

COMPLIES WITH ANSI/NSF 7
FOR FOOD SERVICE

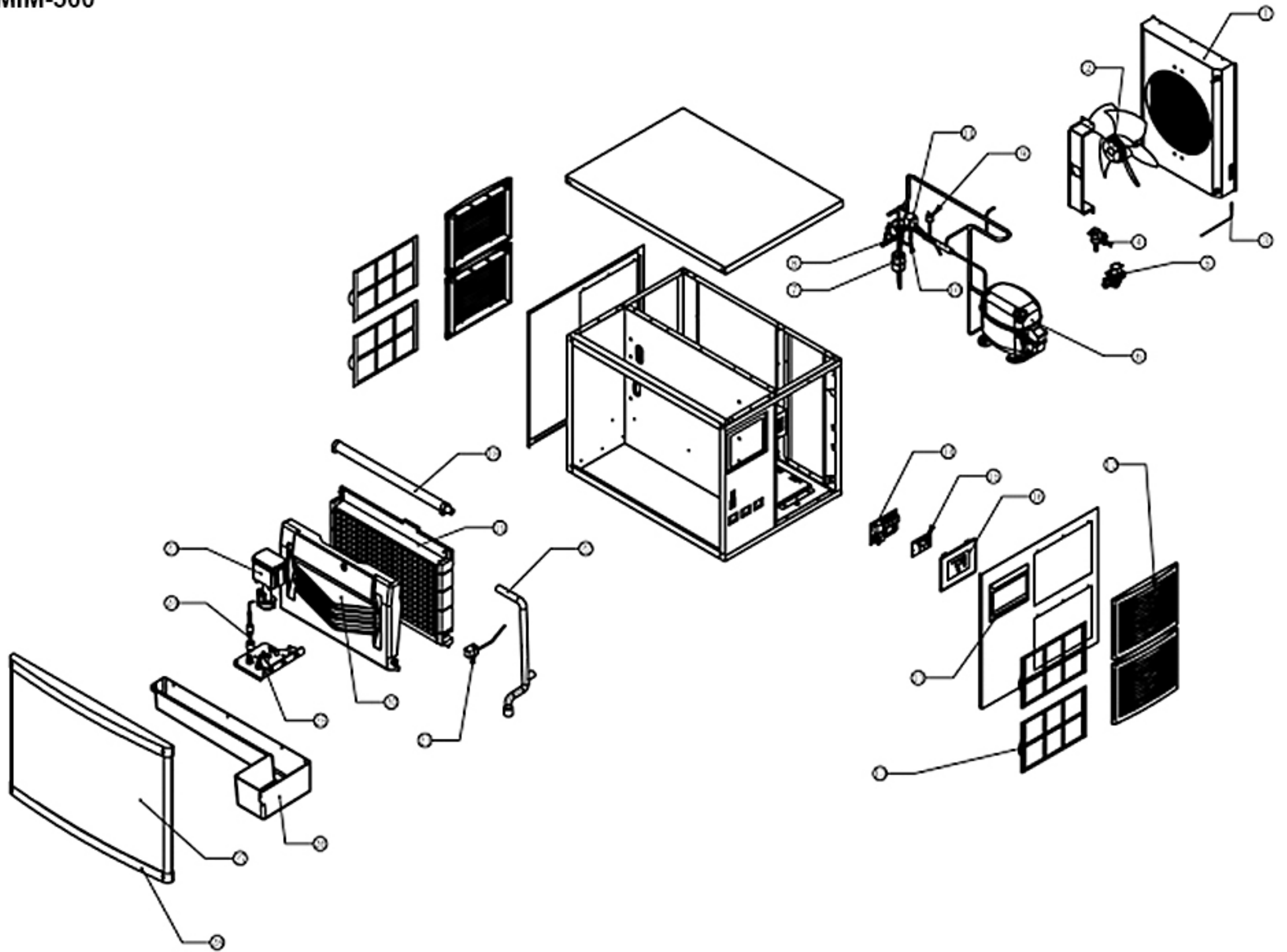


3/4 View



NEMA 5-15P

SMIM-500



| NO. | Part Name | Factory Part NO. |
|-----|--------------------------------------|-------------------|
| 1 | MICROCHANNEL CONDENSER | 03.005.042 |
| 2 | FAN | 03.006.021 |
| 3 | CONDENSATION SENSOR | 04.010.008 |
| 4 | INLET VALVE | 04.003.008 |
| 5 | DRAIN VALVE | 04.002.006 |
| 6 | COMPRESSOR | 03.001.092 |
| 7 | DRY FILTER | 02.006.002 |
| 8 | EXPANSION VALVE | 04.004.018 |
| 9 | HIGH VOLTAGE SWITCH | 03.017.018 |
| 10 | DEFROST VALVE BODY | 04.005.003 |
| 11 | DEFROST VALVE COIL | 04.007.006 |
| 12 | PLASTIC WINDOW FILTER | 05.015.003 |
| 13 | VENTILATION WINDOW FILTER | 05.016.005 |
| 14 | PC BOARD | 03.011.038 |
| 15 | DISPLAY PANEL | 03.012.043 |
| 16 | ELECTRICAL CONTROL FIXING PLATE | 05.006.004 |
| 17 | CONTROL PANEL COVER | 05.005.002 |
| 18 | SPRAY PIPE (PARTS OF EVAPORATOR) | SL.FB.32480661.00 |
| 19 | EVAPORATOR | 03.003.013 |
| 20 | SKATEBOARD (PARTS OF EVAPORATOR) | SL.FB.32479807.00 |
| 21 | ICE FULL SENSOR | 03.013.009 |
| 22 | UPPER WATER PIPE | 09.001.002 |
| 23 | WATER PUMP | 03.010.001 |
| 24 | WATER LEVEL WATER TEMPERATURE SENSOR | 04.010.016 |
| 25 | SINK PUMP FIXING PLATE | 05.002.001 |
| 26 | SINK | 05.001.002 |
| 27 | FRONT PANEL | 05.018.002 |
| 28 | DOOR PLASTIC END CAP | BJ.FB.75630052.00 |