

TECHNICAL DATA

Dimensions

| | |
|------------------------------|-----------------------|
| Dimensions (WxDxH) | 26" x 27" x 38.1" |
| Output (lb/24hr) | 160 lbs |
| Bin Capacity | 80 lbs |
| Net Weight | 121 lbs |
| Gross Weight | 144 lbs |
| Packaging Dimensions (WxDxH) | 30.7" x 29.3" x 35.4" |
| Ice Cube Size half cube | .86"x.86".86" |

Cooling

| | |
|------------------------|---------|
| Refrigerant | R290 |
| Temperature Display | Yes |
| Temperature Controller | Digital |
| Condenser Unit | Air |
| Compressor | Secop |

Construction

| | |
|----------------------------------|----------------------------|
| Exterior Material | 304 series stainless steel |
| Interior Material | Polyethylene |
| Water Filter Capacity | 2.2 GPM |
| UV Light Included For Sanitation | |

Electrical

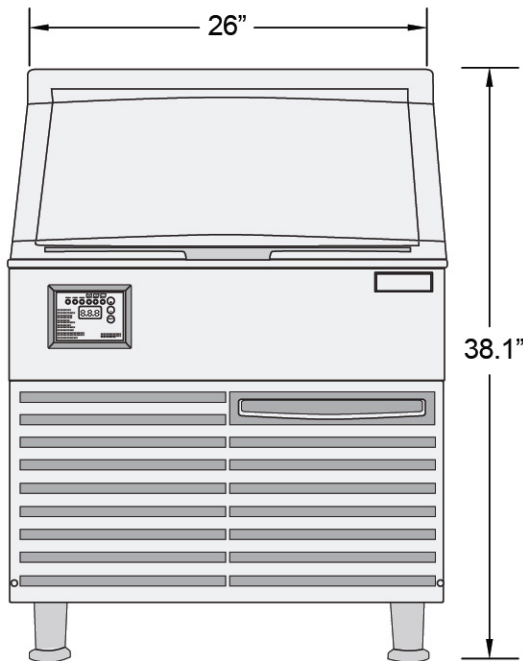
| | |
|---------|------|
| Voltage | 115 |
| Power | 451W |
| Hz | 60 |

PLAN VIEW

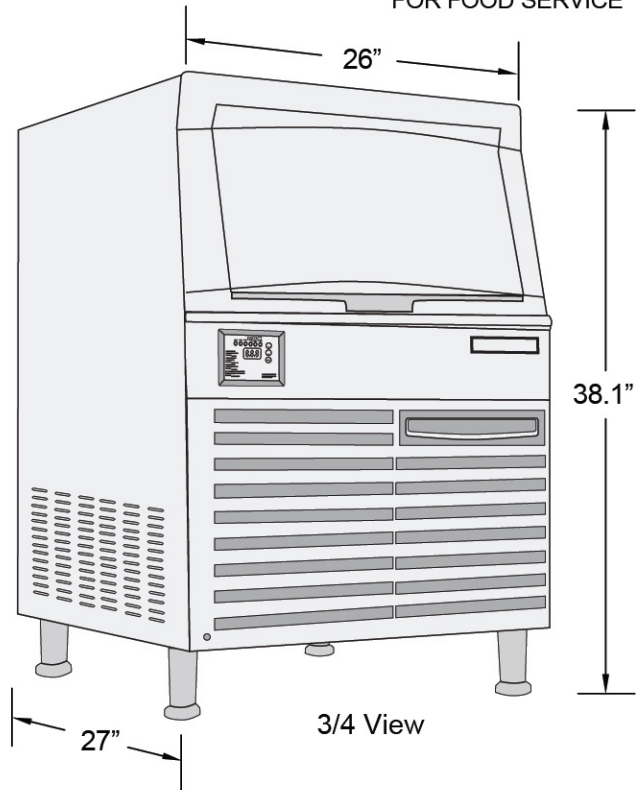


Intertek

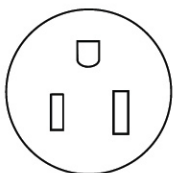
COMPLIES WITH ANSI/NSF 7
FOR FOOD SERVICE



Front View

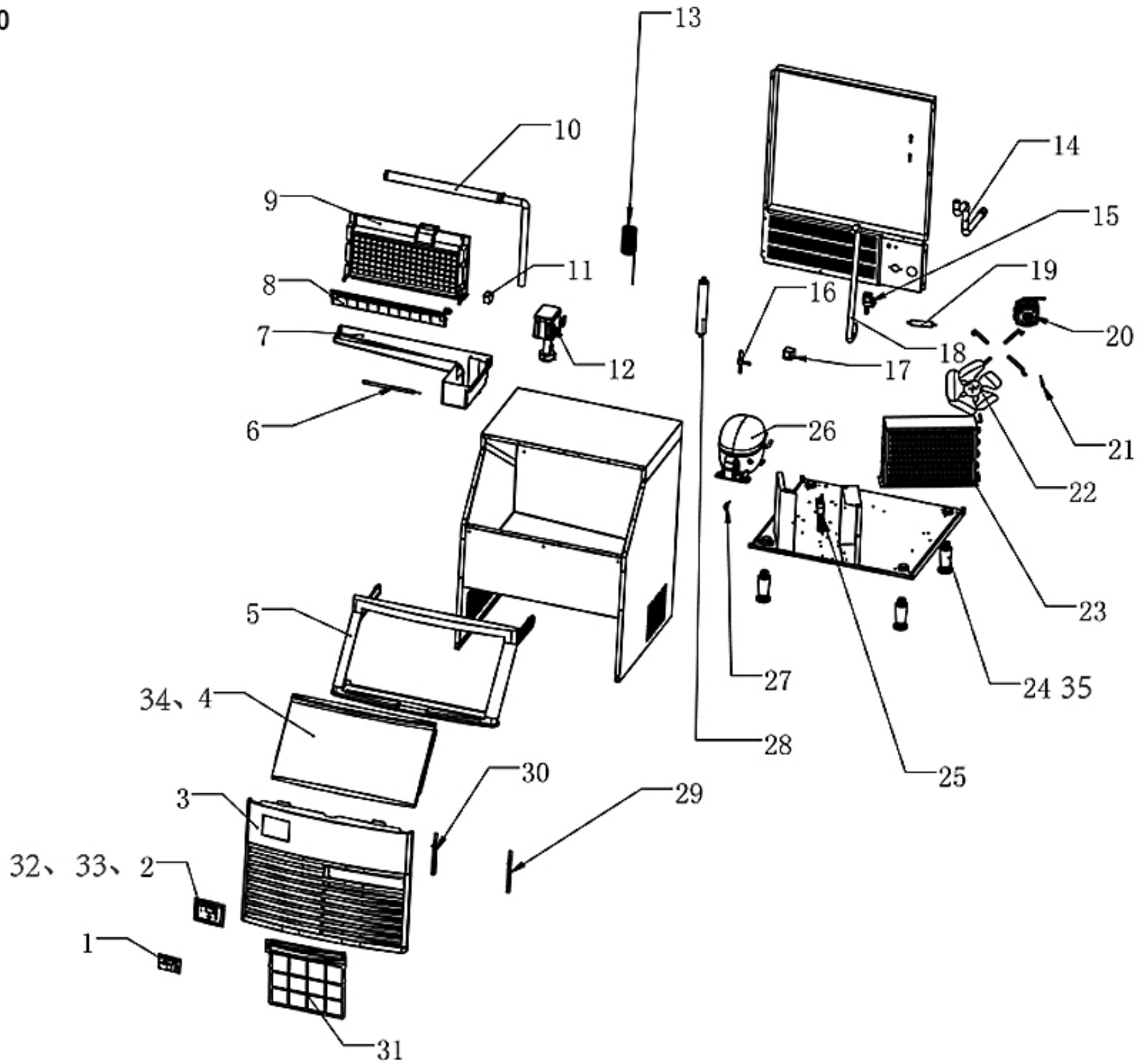


3/4 View



NEMA 5-15P

SUIM-160



| NO. | Part Name | Factory Part NO. |
|---------|---|-------------------|
| 1 | DISPLAY PANEL | 03.012.043 |
| 2,32,33 | CONTROL PANEL | 05.004.005 |
| | | 05.004.006 |
| | | 18.001.039 |
| 3 | FRONT VENTILATION WINDOW | 05.015.013 |
| 4,34 | DOOR PANEL ASSEMBLY | 05.013.016 |
| | | 05.013.018 |
| 5 | DOOR FRAME ASSEMBLY | 05.014.009 |
| 6 | COLD LIGHT | 06.017.003 |
| 7 | SINK-160 | 05.001.005 |
| 8 | SKATEBOARD (PARTS OF EVAPORATOR) | 03.004.003 |
| 9 | EVAPORATOR | 03.003.006 |
| 10 | SPRINKLER TUBE ASSEMBLY (PARTS OF EVAPORATOR) | SL.FB.32480654.00 |
| 11 | ICE FULL SENSOR | 03.013.008 |
| 12 | WATER PUMP | 03.009.005 |
| 13 | CAPILLARY | 02.002.006 |
| 14 | OFF-BOARD DRAIN | 17.009.001 |
| 15 | INLET VALVE | 04.003.010 |
| 16 | DEFROST VALVE BODY | 04.005.003 |
| 17 | DEFROST VALVE COIL | 04.007.006 |
| 18 | SILICONE HOSE | 09.005.003 |
| 19 | DRY FILTER | 02.005.002 |
| 20 | FAN | 03.006.011 |
| 21 | CONDENSATION SENSOR | 04.010.008 |
| 22 | FAN BLADE | 03.007.001 |
| 23 | CONDENSER | 03.005.008 |
| 24,35 | FOOT ASSEMBLY | 17.007.003 |
| | | 17.007.004 |
| 25 | PC BOARD | 03.011.038 |
| 26 | LED LIGHT REED SWITCH MAGNETIC SWITCH | 06.016.005 |
| 27 | COMPRESSOR DLE6.5CN | 03.001.096 |
| 28 | GAS-LIQUID SEPARATOR | 02.003.008 |
| 29 | FILTER RIGHT CARD SLOT-60/80/100/12 | 05.016.024 |
| 30 | FILTER LEFT CARD SLOT-60/80/100/12 | 05.016.023 |
| 31 | VENTILATION WINDOW FILTER | 05.016.022 |